

Image Fusion Technique using Multi-resolution Singular Value Decomposition

V.P.S. Naidu

National Aerospace Laboratories, Bengaluru- 560 017
E-mail: vpsnaidu@gmail.com

ABSTRACT

A novel image fusion technique based on multi-resolution singular value decomposition (MSVD) has been presented and evaluated. The performance of this algorithm is compared with that of well known image fusion technique using wavelets. It is observed that image fusion by MSVD perform almost similar to that of wavelets. It is computationally very simple and it could be well suited for real time applications. Moreover, MSVD does not have a fixed set of basis vectors like FFT, DCT and wavelet etc. and its basis vectors depend on the data set.

Keywords: Multi-sensor image fusion, multi-resolution SVD, image fusion performance evaluation metrics

1. INTRODUCTION

Multi-sensor image fusion (MIF) is a technique to merge the information content from several images (or acquired from different imaging sensors) taken from the same scene in order to accomplish a combined image that contains the finest information coming from the different original source images¹. Hence, the fused image would provide superior quality image than any of the original source images. Recently, MIF has become as a new and promising research area for image processing community. The benefiting fields from MIF are viz. surveillance, military, remote sensing, machine vision, computer vision, robotic and medical imaging etc. Depending on the merging stage, MIF could be performed at three different levels viz. pixel level, feature level and decision level^{2,3}. In this paper, a novel pixel-level MIF is presented that represents a fusion process generating a single combined image containing an additional description than individual source image.

The basic MIF is to take the mean of the grey level registered images pixel by pixel. This technique produces several undesired effects and reduced feature contrast. To overcome these problems, multi-resolution techniques such as wavelets^{1,4-12}, multi-scale transforms like image pyramids^{3,13-16}, signal processing techniques like spatial frequency¹⁷, statistical signal processing^{18,19} and fuzzy set theory²⁰ have been proposed and studied extensively. Discrete wavelet transform would provide directional information in decomposition levels and contain unique information at different resolutions and hence it is used for image fusion by many scholars^{4,5}. In this paper, a novel MIF technique based on multi-resolution singular value decomposition (MSVD) is presented to fuse the source images. The results obtained with MSVD are compared with wavelet based image fusion. The wavelet used in this is Daubechies 2 (db2).

One of the important prerequisites to be able to apply fusion technique is the image registration i.e., the information in the source images needed to be adequately aligned and

registered prior to fusion of the images. In this paper, it is assumed that the images to be fused are already registered.

2. MULTI-RESOLUTION SINGULAR VALUE DECOMPOSITION

Multi-resolution singular value decomposition is very similar to wavelets transform, where signal is filtered separately by low pass and high pass finite impulse response (FIR) filters and the output of each filter is decimated by a factor of two to achieve first level of decomposition. The decimated low pass filtered output is filtered separately by low pass and high pass filter followed by decimation by a factor of two provides second level of decomposition. The successive levels of decomposition can be achieved by repeating this procedure. The idea behind the MSVD is to replace the FIR filters with singular value decomposition (SVD)²¹.

2.1 1D Multi-resolution Singular Value Decomposition

Let $X = [x(1), x(2), \dots, x(N)]$ represent a 1D signal of length N and it is assumed that N is divisible by 2^k for $K \geq 1$ ²¹⁻²⁶. Rearrange the samples in such a way that the top row contains the odd number indexed samples and the bottom row contains the even number indexed samples. Let the resultant matrix called data matrix is:

$$X_1 = \begin{bmatrix} x(1) & x(3) & \dots & x(N-1) \\ x(2) & x(4) & \dots & x(N) \end{bmatrix} \quad (1)$$

Denote the scatter matrix

$$T_1 = X_1 X_1^T \quad (2)$$

Let U_1 be the eigenvector matrix that brings T_1 into diagonal matrix as:

$$U_1^T T_1 U_1 = S_1^2 \quad (3)$$

The diagonal matrix $S_1^2 = \begin{bmatrix} s_1(1)^2 & 0 \\ 0 & s_2(1)^2 \end{bmatrix}$ contains the squares of the singular values, with $s_1(1) > s_2(2)$.

Let $\hat{X}_1 = U_1^T X_1$ so that $X_1 = U_1 \hat{X}_1$ (4)

The top row of \hat{X}_1 , denoted $\hat{X}_1(1,:)$ contains approximation component that corresponds to the largest eigenvalue. The bottom row of \hat{X}_1 , denoted $\hat{X}_1(2,:)$ contains detail component that corresponds to the smallest eigenvalue. Let $\Phi_1 = \hat{X}_1(1,:)$ and $\Psi_1 = \hat{X}_1(2,:)$ represent the approximation and detail components respectively. The successive levels of decomposition repeats the procedure described above by placing the approximation component Φ_1 in place of X . The above outlined procedure can be described formally. This procedure can be repeated recursively K times. Let $\Phi_0(1,:) = X$ so that the initial approximation component is the original signal. For each level l , the approximation component vector Φ_l has $N_l = N / 2^l$ elements that are represented as:

$\Phi_l = [\phi_l(1), \phi_l(2), \dots, \phi_l(N_l)]$ (5)

The K level MSVD for $l = 1, 2, \dots, K - 1$ as follows:

$X_l = \begin{bmatrix} \phi_{l-1}(1) & \phi_{l-1}(3) & \dots & \phi_{l-1}(2N_l - 1) \\ \phi_{l-1}(2) & \phi_{l-1}(4) & \dots & \phi_{l-1}(2N_l) \end{bmatrix}$ (6)

$T_l = X_l X_l^T = U_l S_l^2 U_l^T$, where singular values to be arranged as

$s_l(1) \geq s_l(2)$ (7)

$\hat{X}_l = U_l^T X_l$ (8)

$\Phi_l = \hat{X}_l(1,:)$ (9)

$\Psi_l = \hat{X}_l(2,:)$ (10)

In general, it is sufficient to store the lowest resolution approximation component vector Φ_L , the details component vectors Ψ_l for $l = 1, 2, \dots, L$ and the eigenvector matrices U_l for $l = 1, 2, \dots, L$. Hence the MSVD can be written as:

$X \rightarrow \{ \Phi_L, \{ \Psi_l \}_{l=1}^L, \{ U_l \}_{l=1}^L \}$ (11)

The original signal X can be reconstructed from the right hand side, since the steps are reversible.

2.2 2D Multi-resolution Singular Value Decomposition

1D multi-resolution singular value decomposition (MSVD) described in section 2.1 can be easily extended to 2D MSVD and even for higher dimensions. The first level decomposition of the image proceeds as follows. Divide the $M \times N$ image X into non-overlapping 2×2 blocks and arrange each block into a 4×1 vector by stacking columns to form the data matrix X_1 . The blocks may be taken in transpose raster-

scan manner or in other words proceeding downwards first and then to right. The eigen-decomposition of the 4×4 scatter matrix is:

$T_l = X_l X_l^T = U_l S_l^2 U_l^T$ (12)

where the singular values are arranged in decreasing

order as $s_1(1) \geq s_2(2) \geq s_3(3) \geq s_4(4)$

Let $\hat{X}_l = U_l^T X_l$. The first row of \hat{X}_l corresponds to the largest eigenvalue and considered as approximation component. The remaining rows contain the detail component that may correspond to edges or texture in an image. The elements in each row may be rearranged to form $M/2 \times N/2$ matrix. Before proceeding to next level of decomposition, let Φ_1 denote $M/2 \times N/2$ matrix formed by rearranging the row $\hat{X}_1(1,:)$ into matrix by first filling in the columns and then rows. Similarly, each of the three rows $\hat{X}_1(2,:)$, $\hat{X}_1(3,:)$ and $\hat{X}_1(4,:)$ may be arranged into $M/2 \times N/2$ matrices that are denoted as Ψ_1^V , Ψ_1^H and Ψ_1^D respectively. The next level of decomposition proceeds as above where X is replaced by Φ_1 . The complete L level decompositions may be represented as:

$X \rightarrow \{ \Phi_L, \{ \Psi_l^V, \Psi_l^H, \Psi_l^D \}_{l=1}^L, \{ U_l \}_{l=1}^L \}$ (13)

The original image X can be reconstructed from the right hand side, since the steps are reversible. Figure 1 shows the 2D structures of the MSVD with three decomposition levels.

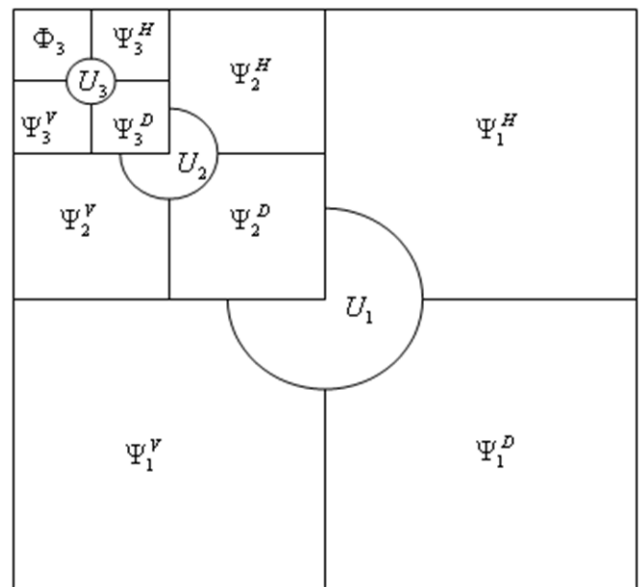


Figure 1. Multi-resolution decomposition structures.

3. FUSION

The schematic diagram for the MSVD image fusion scheme is shown in Fig. 2. One can observe that the modification of the present scheme is the use MSVD instead of wavelets or pyramids. The images to be fused I_1 and I_2 are decomposed into L ($l = 1, 2, \dots, L$) levels using MSVD. At each decomposition level ($l = 1, 2, \dots, L$), the fusion rule will select

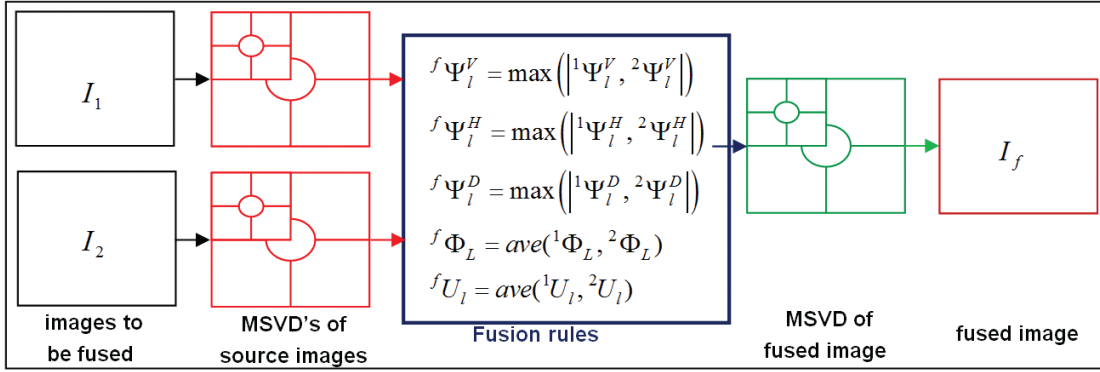


Figure 2. Schematic diagram for the MSVD image fusion scheme.

the larger absolute value of the two MSVD detailed coefficients, since the detailed coefficients correspond to sharper brightness changes in the images such as edges and object boundaries etc. These coefficients are fluctuating around zero. At the coarsest level ($l=L$), the fusion rule take average of the MSVD approximation coefficients since the approximation coefficients at coarser level are the smoothed and subsampled version of the original image. Similarly, at each decomposition level ($l=1,2,\dots,L$), the fusion rule take the average of the two MSVD eigen matrices. The fused image I_f can be obtained using :

$$I_f \leftarrow \left\{ f\Phi_L, \left\{ f\Psi_l^V, f\Psi_l^H, f\Psi_l^D \right\}_{l=1}^L, \left\{ fU_l \right\}_{l=1}^L \right\} \quad (14)$$

4. PERFORMANCE EVALUATION

The performance of image fusion algorithms can be evaluated when the reference image is available using the following metrics:

4.1 Root Mean Square Error

It is computed as the root mean square error (RMSE) of the corresponding pixels in the reference image I_r and the fused image I_f . It will be nearly zero when the reference and fused images are alike and it will increase when the dissimilarity increases²⁷.

$$RMSE = \sqrt{\frac{1}{MN} \sum_{x=1}^M \sum_{y=1}^N (I_r(x,y) - I_f(x,y))^2} \quad (15)$$

4.2 Peak Signal to Noise Ratio

$$PSNR = 20 \log_{10} \left(\frac{L^2}{\frac{1}{MN} \sum_{x=1}^M \sum_{y=1}^N (I_r(x,y) - I_f(x,y))^2} \right) \quad (16)$$

where, L in the number of gray levels in the image

This value will be high when the fused and reference images are alike and higher value implies better fusion^{28,29}.

4.3 Spectral Information Divergence

The spectral information divergence (SID) can be computed as

$$SID(I_t, I_f) = D(I_t \| I_f) + D(I_f \| I_t) \quad (18)$$

where, $D(I_t \| I_f) = I_t \log(I_t / I_f)$, the values of I_t and I_f should be in between 0 and 1

$$D(I_f \| I_t) = I_f \log(I_f / I_t)$$

The ideal value is zero and it will increase when there is a spectral divergence.

The following metrics could be used when the reference image is not available to test the performance of the fused algorithms.

4.4 Standard Deviation (SD)

Standard deviation is composed of the signal and noise parts^{28,30}. This metric is more efficient in the absence of noise. It measures the contrast in the fused image. Fused image with high contrast would have a high standard deviation.

$$\sigma = \sqrt{\sum_{i=0}^L (i - \bar{i})^2 h_{I_f}(i)}, \quad \bar{i} = \sum_{i=0}^L i h_{I_f}(i) \quad (19)$$

where, $h_{I_f}(i)$ is the normalised histogram of the fused image $I_f(x,y)$.

4.5 Spatial Frequency (SF)

Spatial frequency can be computed as^{28,31,32}:

$$SF = \sqrt{RF^2 + CF^2} \quad (20)$$

where, row frequency (RF)

$$RF = \sqrt{\frac{1}{MN} \sum_{x=1}^M \sum_{y=2}^N [I_f(x,y) - I_f(x,y-1)]^2}$$

column frequency (CF)

$$CF = \sqrt{\frac{1}{MN} \sum_{y=1}^N \sum_{x=2}^M [I_f(x,y) - I_f(x-1,y)]^2}$$

It indicates the overall activity level in the fused image. The fused image with high activity level would have high spatial frequency.

5. RESULTS AND DISCUSSION

National Aerospace Laboratories (NAL) indigenous aircraft (SARAS), shown in Fig. 3(a), is considered as a

reference image I_r to evaluate the performance of the proposed fusion algorithm. The complementary pair (data set1) input images I_1 and I_2 are taken to evaluate the fusion algorithm and these images are shown in Fig. 3(b) and 3(c). The first column in Figs. 4-7 shows fused images and the second column shows the error images. The error is computed as $I_e(x,y) = I_r(x,y) - I_f(x,y)$. The fused and error images by one level of decomposition using MSVD and wavelet fusion algorithms are shown in Figs. 4 and 5, respectively.

Similarly the fused and error images by two levels of decomposition using MSVD and wavelet are shown in Figs. 6 and 7, respectively. It is observed that the fused images of both MSVD and wavelet are almost similar for these images. The reason could be because of taking the complementary pairs. One can see that the fused image preserves all useful information from the source images. The performance metrics for evaluating the image fusion algorithms are shown in Table 1. The metrics showed in tables in bold font are better among



Figure 3. Reference and source images–data set1. (a) reference image I_r ; (b) first source image I_1 ; (c) second source image I_2 .



Figure 4. Fused and error image with one level ($L=1$) of decomposition using MSVD.



Figure 5. Fused and error image with one level ($L=1$) of decomposition using wavelets.



Figure 6. Fused and error image with two levels ($L=2$) of decomposition using MSVD.



Figure 7. Fused and error image with two levels ($L=2$) of decomposition using wavelets.

others. From the tables it is observed that MSVD with higher level of decomposition performed well. Spectral information divergence (SID) shows that fusion wavelet with one level of decomposition gives good results and it is contradictory with other fusion quality evaluation metrics. The execution time of each algorithm is also shown in Table 1. Fusion with wavelet takes less time than MSVD since the former algorithm was developed using Matlab inbuilt functions.

In second data set, forward looking infrared (FLIR) image (left) and low light television (LLTV) image (right) are considered for evaluation of the fusion algorithms (data set2)³³ and are shown in Fig. 8. Roads appear very clear in FLIR

image since the roads are high thermal contrast. Trees and light spots appear in LLTV image. The fused images by MSVD (left) and wavelets (right) with one level of decomposition and second levels of decomposition are shown in Fig. 9 and Fig. 10 respectively. The fused image preserves all the useful information from the LLTV and FLIR images. Performance metrics are shown in Table 2. It is observed that fusion by MSVD shows better performance than wavelets.

6. CONCLUSION

A novel image fusion algorithm by MSVD has been presented and evaluated. The performance of this algorithm

Table 1. Performance evaluation metrics–data set1.

Levels of	Algorithm	with reference image			without reference image		Execution time (s)
		RMSE	SID	PSNR	SD	SF	
L=1	MSVD	10.1336	6.8×10^{-4}	38.1072	52.4543	15.1229	1.141
	wavelets	10.3674	0	38.0081	52.2394	14.2421	0.539
L=2	MSVD	8.5844	0.0399	38.8277	53.5597	18.0584	1.421
	wavelets	8.8212	0.0269	38.7095	53.1383	17.2342	0.625

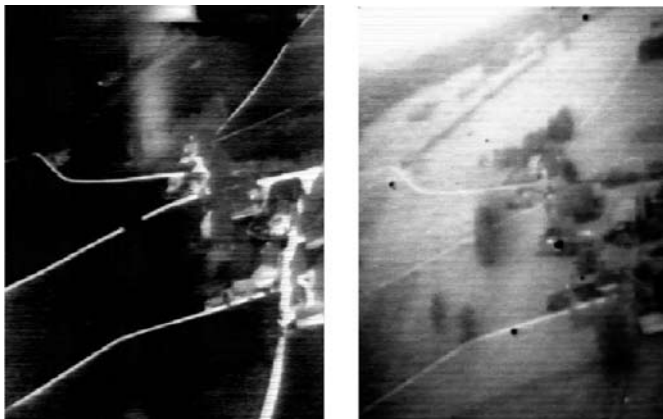


Figure 8. (a) FLIR and (b) LLTV source images to be fused – data set 2.

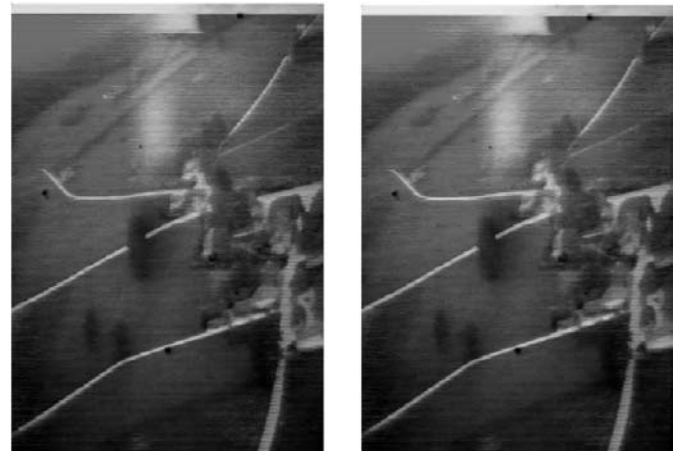


Figure 9. Fused images with one level (L=1) of decomposition using (a) MSVD and (b) wavelets.

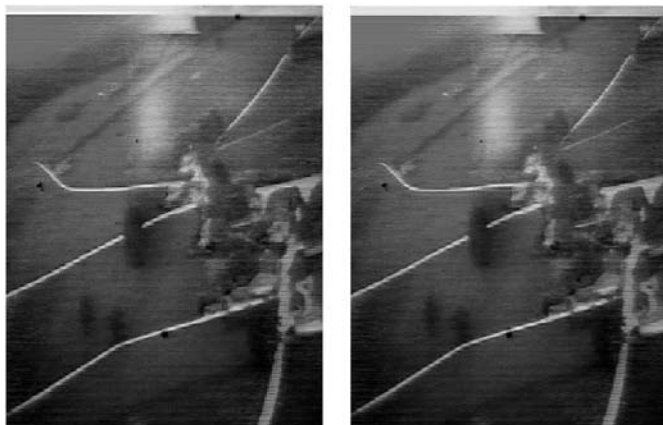


Figure 10. Fused images with two levels (L=2) of decomposition using (a) MSVD and (b) wavelets.

Table 2. Performance evaluation metrics – data set2.

Levels of decomposition	Algorithm	without reference image	
		SD	SF
L=1	MSVD	48.10	16.21
	wavelets	47.82	14.95
L=2	MSVD	49.15	18.52
	wavelets	48.54	17.08

is compared with well known image fusion technique by wavelets. It is concluded that image fusion by MSVD perform almost similar to wavelets. It is computationally very simple and it could be well suited for real time applications. Moreover, MSVD does not have a fixed set of basis vectors like FFT, DCT and wavelet etc. and its basis vectors depend on the data set.

REFERENCES

1. Pajares, Gonzalo & Manuel, Jesus de la Cruz, A wavelet-based image fusion tutorial, *Pattern Recognition*, 2007, **37**, 1855-872.
2. Varsheny, P.K., Multisensor data fusion, *Elec. Comm. Engg., Journal*, 1997, **9**(12), 245-53.
3. Burt, P.J. & Loiczynski, R.J. Enhanced image capture through fusion, *In Proc. of 4th International Conference on Computer Vision*, Berlin, Germany, 1993, 173-82.
4. Mallet, S.G. A theory for multiresolution signal decomposition: The wavelet representation. *IEEE Trans. Pattern Anal. Mach. Intel.*, 1989, **11**(7), 674-93, 1989.
5. Wang, H.; Peng, J. & W. Wu. Fusion algorithm for multisensor image based on discrete multiwavelet transform, *IEE Pro. Vis. Image Signal Process*, 2002, **149**(5).
6. Li, H.; Manjunath, B.S. & Mitra, S.K. Multisensor image fusion using wavelet transform, graph. models image process, 1995, **57**(3), 235-45.
7. Pu, T. & Ni, G. Contrast-based image fusion using discrete wavelet transform. *Optical Engineering*, 2000, **39**(8), 2075-2082.
8. Yocky, D.A. Image merging and data fusion by means of the discrete two-dimensional wavelet transform. *J. Opt. Soc. Am. A*, 1995, **12**(9), 1834-841.
9. Nunez, J.; Otazu, X.; Fors, O.; Prades, A.; Pala, V. & Arbiol, R. Image fusion with additive multiresolution wavelet decomposition: applications to spot1 landsat images. *J. Opt. Soc. Am. A*, 1999, **16**, 467-74.
10. Rockinger, O. Image sequence fusion using a shift invariant wavelet transform. *In Proceedings of IEEE Int. Conf. on Image Processing*, 1997, **13**, 288-91.
11. Qu, G.H.; Zang, D.L. & Yan P.F. Medical image fusion by wavelet transform modulus maxima. *J. of the Opt. Soc. of America*, 2001, **9**, 184-90.
12. Chipman, L.J.; Orr, T.M. & Graham, L.N. Wavelets and Image fusion. *In Proceedings SPIE*, 1995, **2529**, 208-19.
13. Jahard, F.; Fish, D.A.; Rio, A.A. & Thompson, C.P. Far/near infrared adapted pyramid-based fusion for automotive night vision. *In IEEE Proc. 6th Int. Conf. on Image Processing and its Applications (IPA97)*. 1997, 886-90.
14. Ajazzi, B.; Alparone, L.; Baronti, S. & Carla, R. Assessment pyramid-based multisensor image data fusion. *In Proceedings SPIE*, 1998, **3500**, 237-48.
15. Akerman, A. Pyramid techniques for multisensory fusion. *In Proc. SPIE*, 1992, **2828**, 124-31.
16. Toet, A.; Van Ruyven, L.J. & Valetton, J.M. Merging thermal and visual images by a contrast pyramid. *Optical Engineering*, 1989, **28**(7), 789-92.
17. Shutao Li; Kwok, James T. & Wang, Yaonan. Combination of images with diverse focuses using the spatial frequency. *Information fusion*, 2001, **2**(3), 167-76.
18. Blum, Rick S. Robust image fusion using a statistical signal processing approach. *Information Fusion*, 2005, **6**, 119-28.
19. Yang, J. & Blum, Rick S. A statistical signal processing approach to image fusion for concealed weapon detection. *In IEEE Int. Conf. on Image Processing*, Rochester, NY, 2002, 513-16.
20. Nejatali, Abdilhossein & Ciric, L.R. Novel image fusion methodology using fuzzy set theory. *Optical Engineering*, 1998, **37**(2), 485-91.
21. Kakarla, R. & Ogunbona, P.O. Signal analysis using a multiresolution form of the singular value decomposition. *IEEE Trans. on Image Processing*, 2001, **10**(5), 724-35.
22. Gerbrands, J.J. On the relationships between SVD, KLT and PCA. *Pattern Recognition*, 1981, **14**, 375-81.
23. Lung, Shung-Yung. Multi-resolution form of SVD for text-independent speaker recognition. *Pattern Recognition*, 2002, **35**, 1637-639.
24. Ashino, R.; Morimoto, A.; Nagase, M. & Vaillancourt R. Image compression with multiresolution singular value decomposition and other methods. *Mathematical and Computer Modeling*, 2005, **41**, 773-90.
25. Yoshikawa, M.; Ashino, R. & Vaillancourt, R. Case study on SVD multiresolution analysis. Scientific Proceedings of Riga Technical University. *Boundary Field Problems and Computer Simulation*, 2004, **46**, 65-79.
26. Ashino, R.; Morimoto, A. Nagase, M. & Vaillancourt, R. Image compression with multiresolution singular value decomposition and other methods. CRM-2939, *ibid.* 01/2004.
27. Naidu, V.P.S.; Girija, G. & Raol, J.R. Evaluation of data association and fusion algorithms for tracking in the presence of measurement loss. AIAA Conference on Navigation, Guidance and Control, Austin, USA, 11-14, August 2003.
28. Naidu, V.P.S. Discrete Cosine Transform-based Image Fusion. *Def. Sci. J.*, 2010, **60**(1), 48-54.
29. Arce, Gonzalo R. Nonlinear Signal Processing – A statistical approach. Wiley-Interscience Inc., Publication, USA, 2005.
30. Blum, Rick S. & Liu, Zheng. Multi-sensor image fusion and its applications. CRC Press, Taylor & Francis Group, NW, 2006.
31. Eskicioglu, A.S. & Fisher, P.S. Image quality measures and their performance. *IEEE Trans. Commu.*, 1995, **43**(12), 2959-965.
32. Shutao Li; Kwok, James T. & Yaonan Wang. Combination of images with diverse focuses using the spatial frequency. *Information Fusion*, 2001, **2**, 169-76.
33. <http://www.imagefusion.org>

Contributor



Dr V.P.S. Naidu obtained M.E in Medical electronics from Anna University Chennai and PhD from University of Mysore. Presently, He is working at multi-sensor data fusion lab, National Aerospace Laboratories, Bengaluru as scientist since December 2001. His areas of interest are: multi sensor data fusion and enhanced flight vision system.